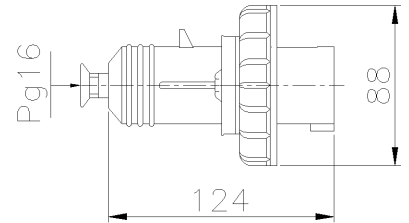




**SERIES CEE-Ex
PLUG**
CODE 477423EX



Datasheet

Specifications

Net Weight	237 G
Rated current	16A
Frequency	50/60Hz
Protection degree	IP66
Poles	3P+N+ \perp
Clock Position	6h
Rated operating voltage	400V ●
Rated insulation voltage	500V
Manufacturing material	Thermoplastic
Execution	Mobile
Hole type	Pg16
Standard plug-socket	IEC 60309-2

Warranties, Reference Standards and Directives

Warranty	1 years
Certification and approval marks	CE, EX, NYCE COLOMBIA
Directives	2012/19/EU (WEEE), 2014/35/EU (LVD), 2011/65/EU (RoHS), 2014/34/EU (ATEX)
Reference Standards	EN 63000:2018, EN 50581:2012, EN 60079 0:2012, EN 60309-1:1999, EN 60079 31:2014, EN 60309-1:1999/A1AC:2014, EN 60079-0/A11:2013, EN 60309-2:1999, EN 60079-15:2010, EN 60309-2:1999/A2:2012, EN 60309-2:1999/A1:2007, EN 60309 1:1999/A1:2007, EN 60309-1:1999/A2:2012

Atex characteristics

ATEX application zone	Zona/Zone 2 and 22
Dust Atex execution	II 3D - Ex tc IIIC T65 °C Dc
Gas Atex execution	II 3G - Ex nA IIC T6 Gc

The images are purely indicative. Palazzoli reserves the right to make changes without notice.